

Downton Abbey®

The Downstairs

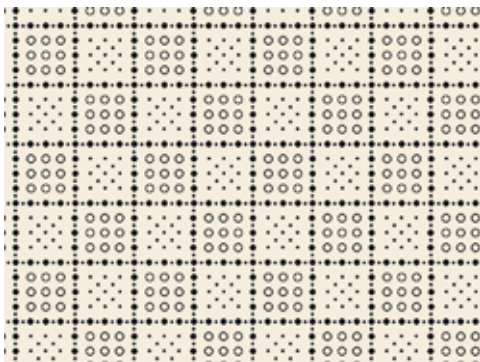
FABRICS BY KATHY HALL



Patmore en Pointe Quilt Design:
Lucy Fazely

Quilt Size: **76 $\frac{1}{8}$ " x 89 $\frac{5}{8}$ "**

andoverfabrics.com



About The Downstairs

Based on the small prints that Mrs. Patmore, Daisy, Ivy, and other house staff wear. They're unassuming prints, which add a little color to what would otherwise be a life of uniformed servitude. Tiny prints, little plaids, stripes. Not overly bold; the colors reflect the Downstairs lifestyle in that they have their own somewhat muted sensibility.

Downton™ and Downton Abbey®. ©2013
Carnival Film & Television Limited. All Rights Reserved.

andover

•
•
•
makower uk
The Henley Studio

Free Pattern Download Available

1384 Broadway New York, NY 10018
Tel. (800) 223-5678 • andoverfabrics.com



7597-B



7597-G



7597-R



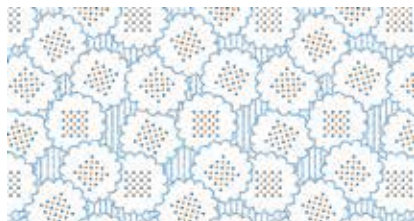
7598-B



*7598-N (extra yds
needed for backing)



7598-R



7600-B



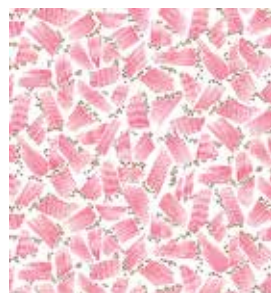
7600-R



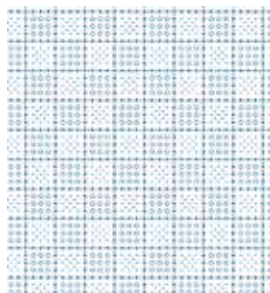
7601-B



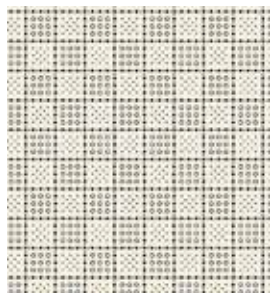
7601-G



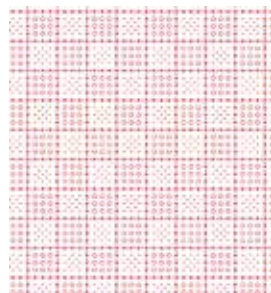
7601-R



7602-B



7602-K



7602-R

FABRIC	1 KIT	5 KITS	10 KITS	20 KITS
7332-K1	1	1	2	4
7666-RK	1	1	2	4
10" square pack (Sundae)	1	5	10	20

BACKING

*7598-N	1	2	4	8
---------	---	---	---	---

Yardage needed for backing: 5% YDS per kit

Bolts needed to cut project kits. 15 yds = 1 bolt

Fabrics shown are 50% of actual size.
All fabrics used in quilt pattern.

Blend with additional fabrics
from Downton Abbey®



7332-K1 3 yds
(includes binding)



7666-RK 3 yds

Downton Abbey®

The Downstairs

FABRICS BY KATHY HALL

Downton™ and Downton Abbey®. ©2013
Carnival Film & Television Limited. All Rights Reserved.

andover : makower uk
The Hanley Studio